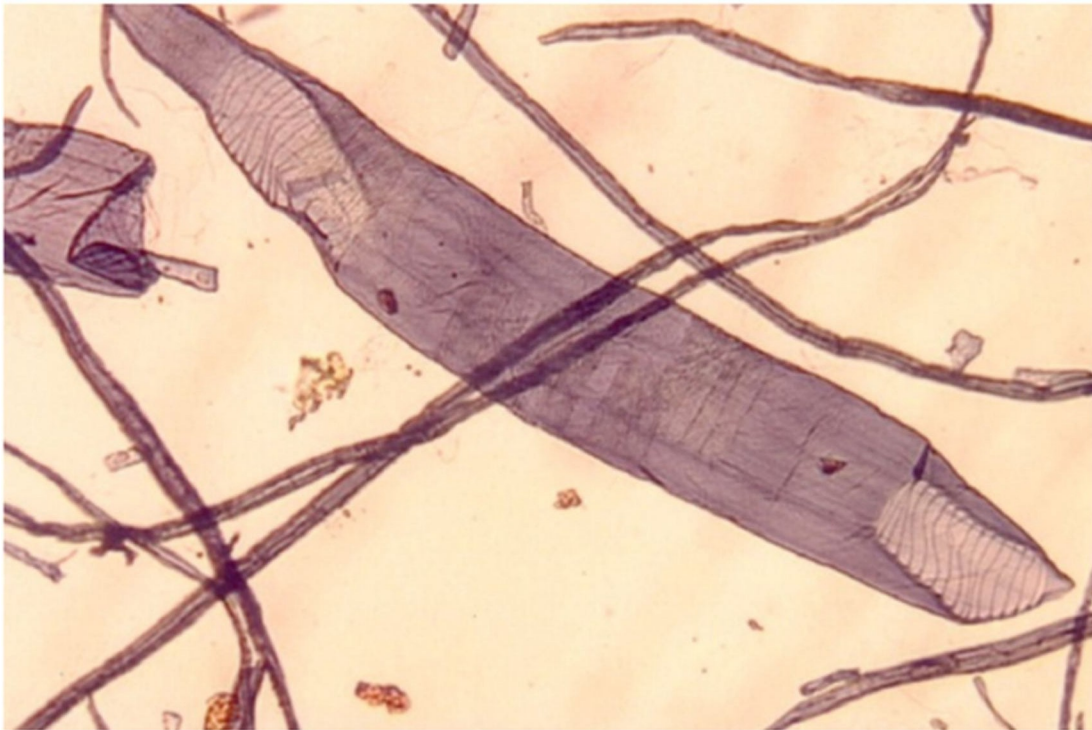


Fiber Analysis

We perform traditional fiber analysis, measuring softwood and hardwood amounts and identifying species. Fibers from paper, paper board, or pulp are dispersed in water, placed on slides, dried, stained, and counted using a microscope. It is not possible to determine the amount of recycled fiber contained in a paper product.

Microscopic inspection can show the amount of damage that has been done to the fibers. The amount and degree of fiber damage helps in developing an opinion regarding the amount of recycled fiber in the sample. It is not possible to determine post consumer versus post industrial recycled fiber.



APPLIED PAPER TECHNOLOGY, INC.



678 627-0222 | 1935 DELK INDUSTRIAL BLVD., SUITE B, MARIETTA, GA 30067 | APPLIEDPAPERTECH.com